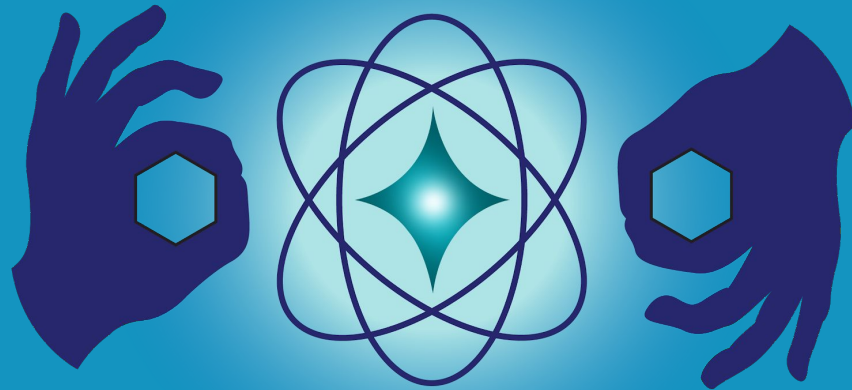
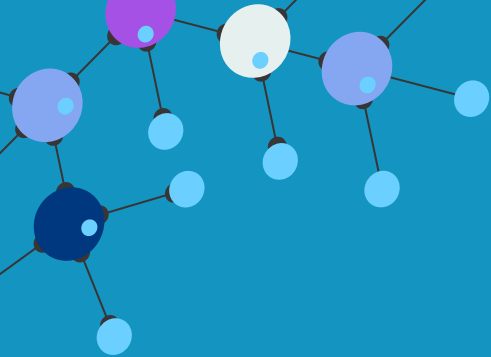


SciAccess

Advancing Disability Inclusion
in Astronomy and STEM

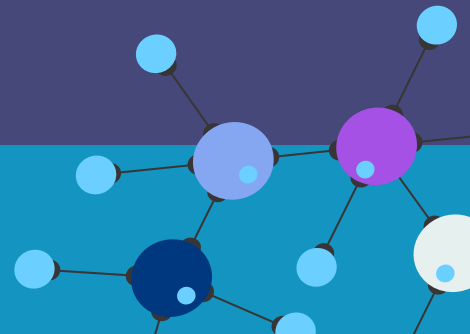
Anna Voelker (they/them): SciAccess Founder and Executive Director
Caitlin O'Brien (she/her): Student at The Ohio State University





SciAccess

The Science Accessibility Conference



SciAccess 2019

Register by Thursday, April 25!

**And explore innovative paths to
Equitable science access
for those with disabilities.**



SciAccess Conference

FEATURING PRESENTATIONS BY:

**Space Explorer, Anousheh Ansari and
Autism Advocate, Dr. Temple Grandin**

Over 60 speakers and 40 sessions

Friday and Saturday, June 28 and 29, 2019

The Ohio State University, Columbus | www.sciaccess.org



Kate Meredith
GLAS President and Director
of Education



Heather Tomko
Ms. Wheelchair USA, Public
Health Researcher



Dr. Sheri Wells-Jensen
Associate Professor at Bowling
Green State University



Noreen Grice
You Can Do Astronomy LLC
President



Senay Daniel
Technical Advisory
Consultant, Self-Advocate



Lindsay Yazzolino
Tactile Design Specialist



Dr. Tiffany Wild
Associate Professor at The Ohio
State University



Dr. Mahadeo Sukhai
Head of Research and Chief
Accessibility Officer



Ken Perry
American Printing House for the
Blind (APH) Software Engineer



Dr. Rosanne Hoffmann
APH STEM Project Leader

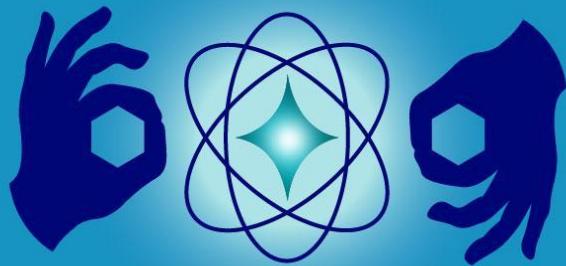


Dr. Jason Nordhaus
Assistant Professor at the National
Technical Institute for the Deaf



Dr. Margo Izzo
Program Director, Transition
Services, OSU Nisonger Center

SciAccess



2020



The Virtual Science Accessibility Conference



Dr. Soyeon Yi

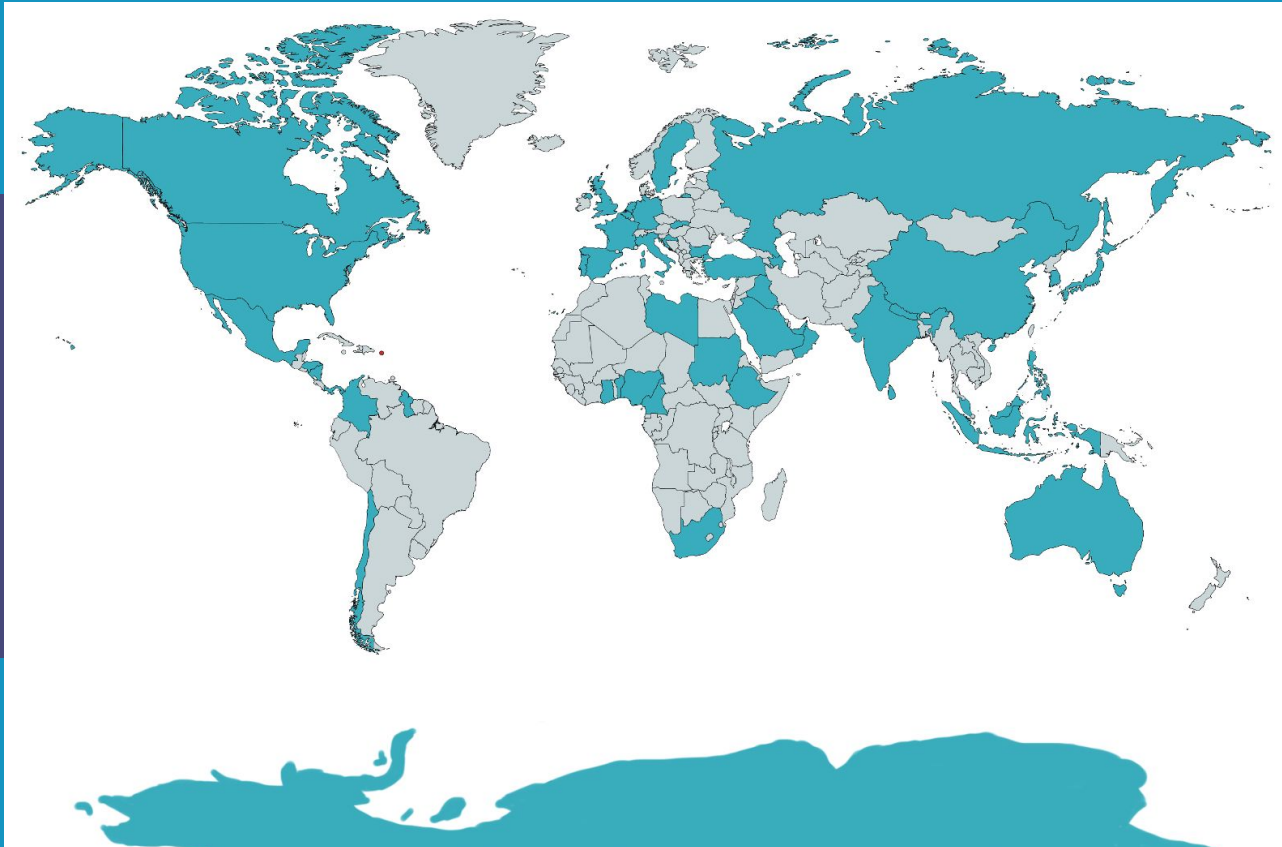


Anna Voelker



Elisabeth (ASL Interpreter)

Map of SciAccess 2020 Attendees



The SciAccess Working Group



Now Announcing...

SciAccess 2021

NOVEMBER 12-13, 2021

Register today at
SciAccess.org



Free Conference Registration

For all AAS members who have applied to speak at the 239th January AAS meeting

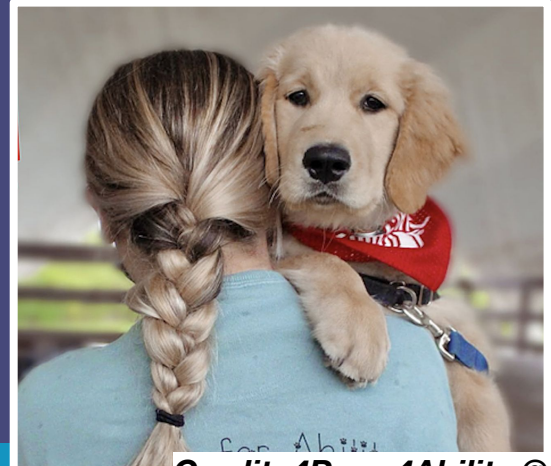
To claim your free tickets...
Please email the title of your abstract to
kate@glaseducation.org or visit
SciAccess.org/scholarships for more information.



Tips for Organizing an Accessible Event

Physical Accessibility

- Ensure locations are wheelchair accessible
 - Star Party Access
- Tactile map of the building
- BLV guide volunteers
- Accessible seating
- Quiet Room



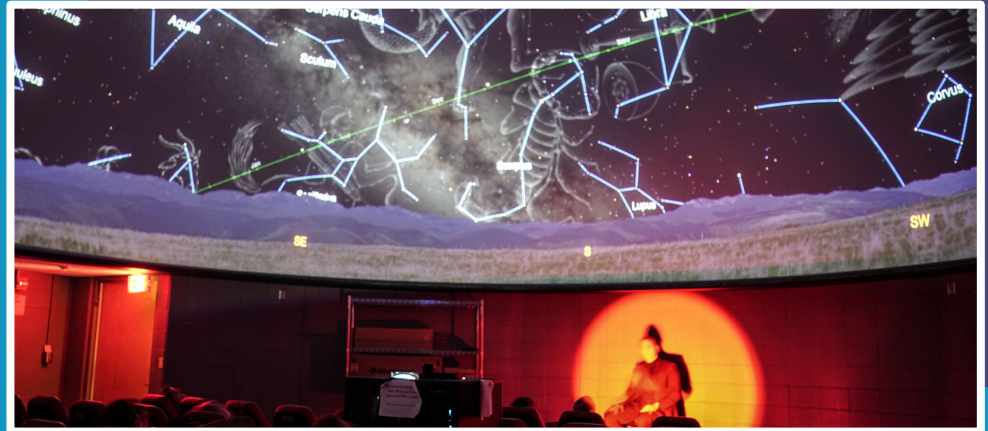
Credit: 4Paws4Ability @ OSU

Tips for Organizing an Accessible Event

Accessible Communication



- ASL interpreting
- CART captioning
- Braille & large print materials
- Slide descriptions
- Color communication badges



Tips for Organizing an Accessible Event

Intentional Inclusivity

- Pronouns on all nametags
- Diverse representation on panels

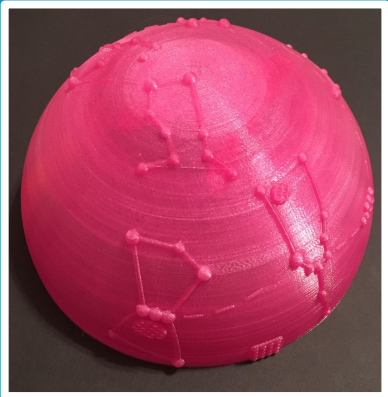
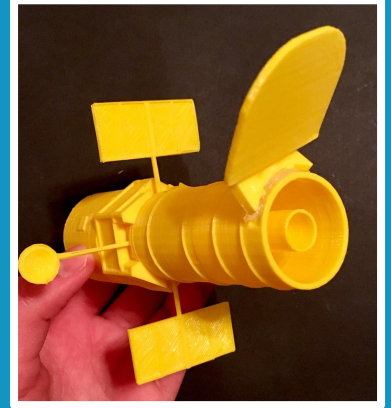
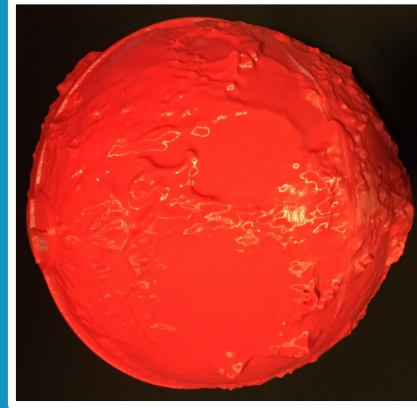
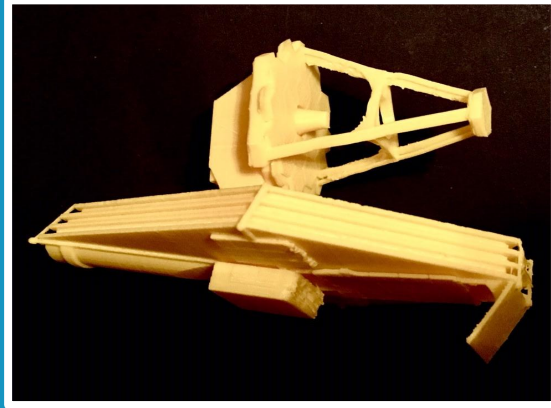
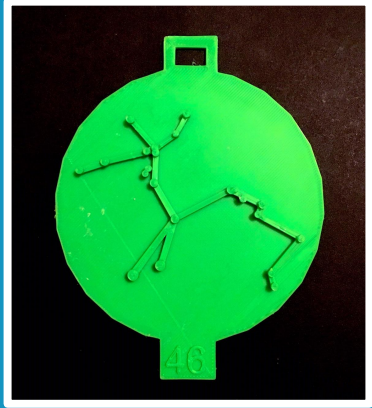


**Badge Credit: Origins Gaming Convention 2021 @
the Columbus Convention Center**

The SciAccess Zenith Mentorship Program



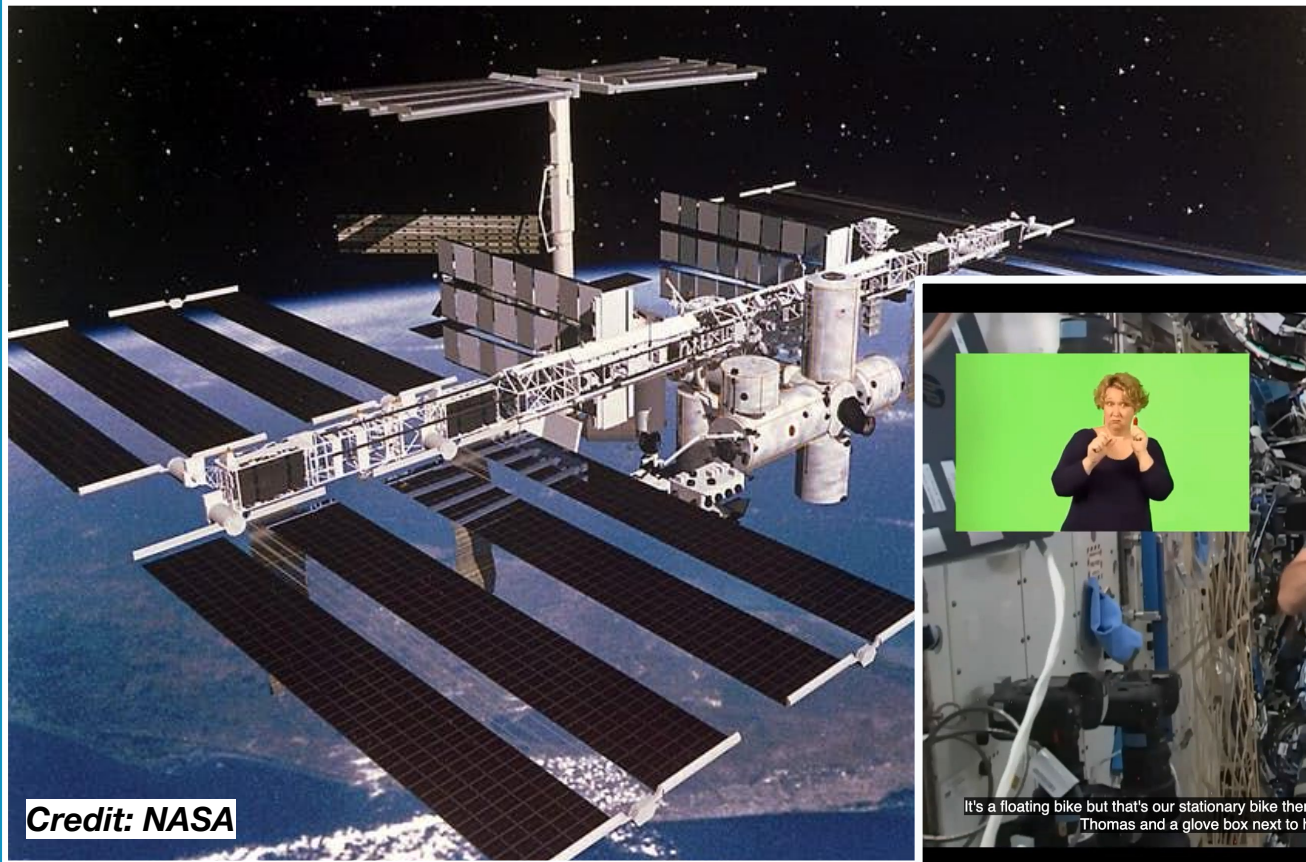
See3D Astronomy Models



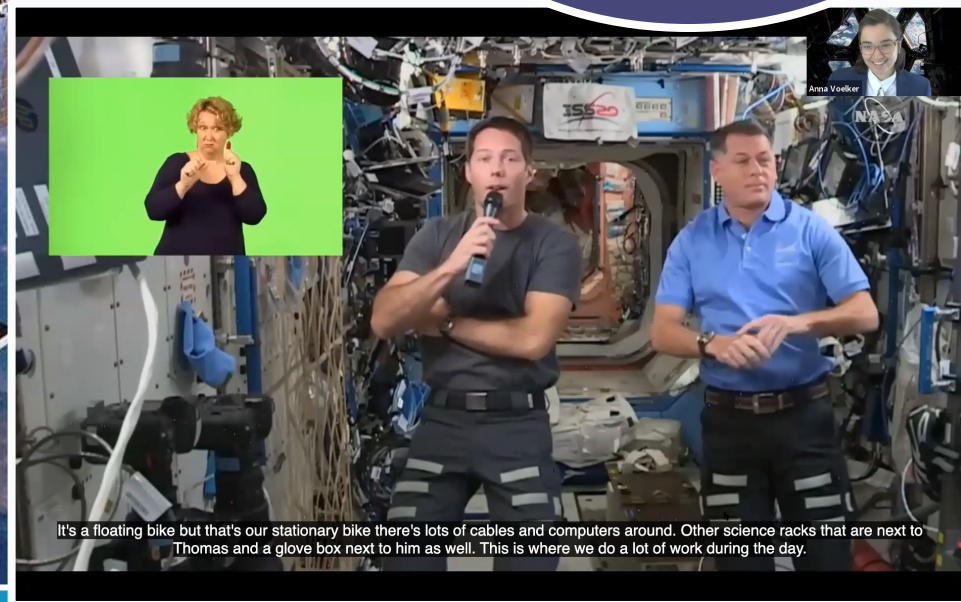
Credit: STScI

ISS Downlink

With NASA Astronaut
Shane Kimbrough
and ESA Astronaut
Thomas Pesquet



Credit: NASA



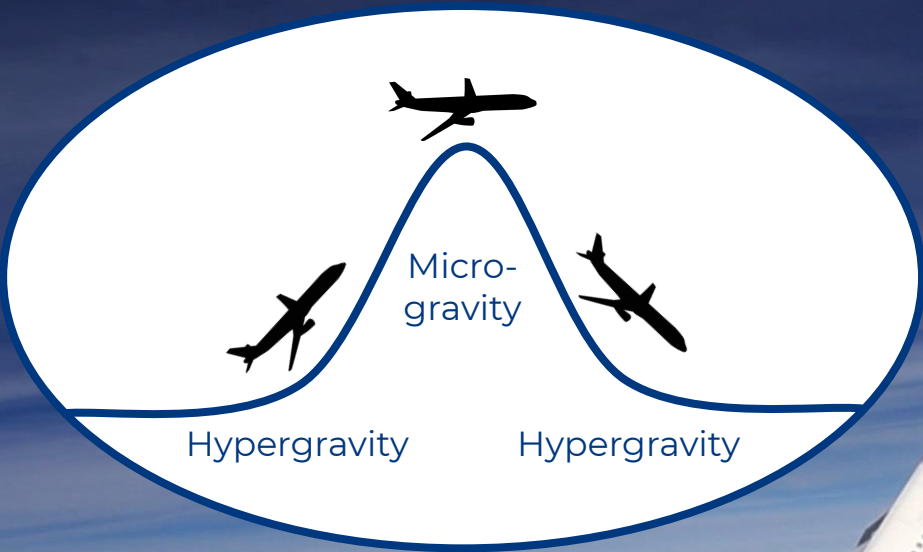
It's a floating bike but that's our stationary bike there's lots of cables and computers around. Other science racks that are next to Thomas and a glove box next to him as well. This is where we do a lot of work during the day.

Mission: AstroAccess

Opening Space for All



ASTROACCESS



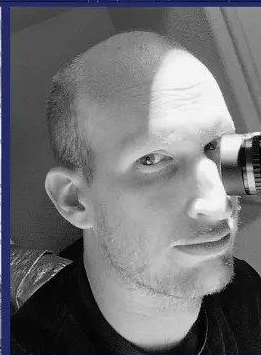
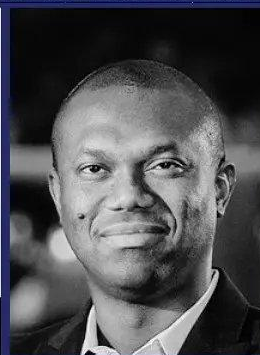


Credits: Steve Boxall/ ZERO-G



ASTROACCESS

Credits: U.S. Navy/Gallaudet University collection



Learn more at
AstroAccess.org

Accessibility Benefits All



Thank you!



For more information, please visit [SciAccess.org](https://www.sciaccess.org)

Links

SciAccess Website:

www.sciaccess.org

SciAccess Email List:

<https://forms.gle/1n7UmJxts4UZAX727>

SciAccess Facebook page:

<https://www.facebook.com/groups/2758761130833027/>

To join the SciAccess Working Group:

<https://go.osu.edu/wg>

To register for the SciAccess conference:

<https://www.eventbrite.com/e/sciaccess-2021-conference-tickets-169791289317>

AstroAccess Website:

www.astroaccess.org

For questions on the Zenith Mentorship Program:

zenith@osu.edu